

Investment Opportunity on FCEV

2017. 9. 18

KISANG LEE

**Automotive R&D Division
Hyundai Motor Group**

How has FCEV evolved ?

1

Next generation FCEV has improved in all aspects

	Tucson ix Fuel Cell	Next Generation
Horse Power	136 hp (100 kW)	163 hp (120 kW)
Driving range *	265 miles	370 miles
Cold Start	-13°F (-25 °C)	-22°F (-30°C)
Warranty	50,000 miles 4 years	100,000 miles 10 years

(* : base on combined fuel economy mode, EPA)

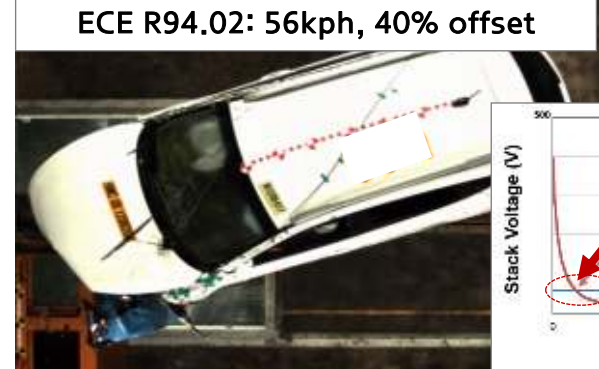


Tucson ix Fuel Cell



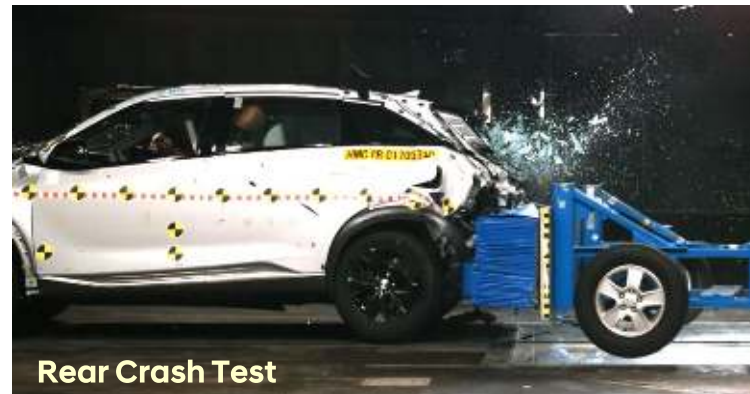
Next Generation FCEV

High voltage safety



(※ Requirements: Electric voltage under 60V_{dc} within 60 seconds, FMVSS305 (USA), ECE R-94/12/95 (EU))

Hydrogen Safety : No gas leakage & all mountings secured



(※ Requirements: Gas leakage rate under average of 118 NLPM for 60min. At least one mounting secured on collision, GTR, NPRM (USA))

(NLPM: Normal Liter Per Minute, GTR: Global Technology Regulation, NPRM: Notice of Proposed Rule Making)

Taxi Service



STEP, Paris ('15.12 ~)



Ulsan City ('16.12 ~)

Car Sharing



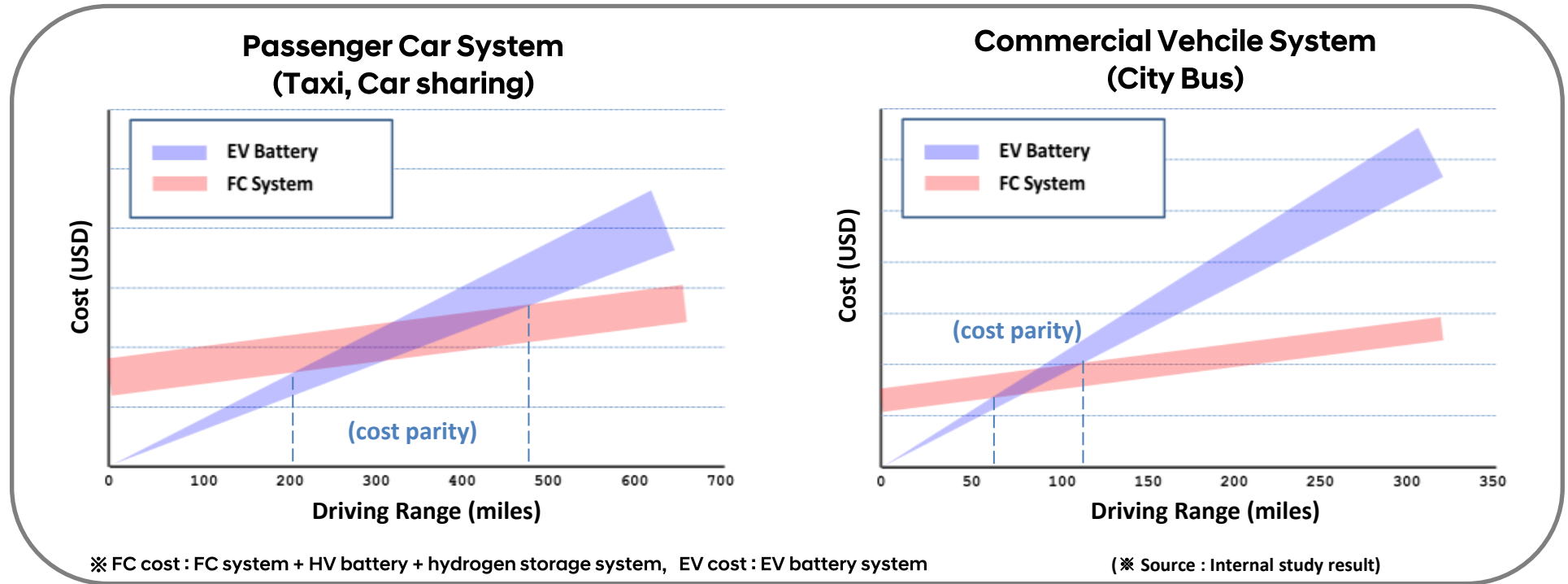
BeeZero, Munich ('16.6 ~)



J car, Gwangju ('17.3 ~)

FCEV taxis & car sharing are in service around the world

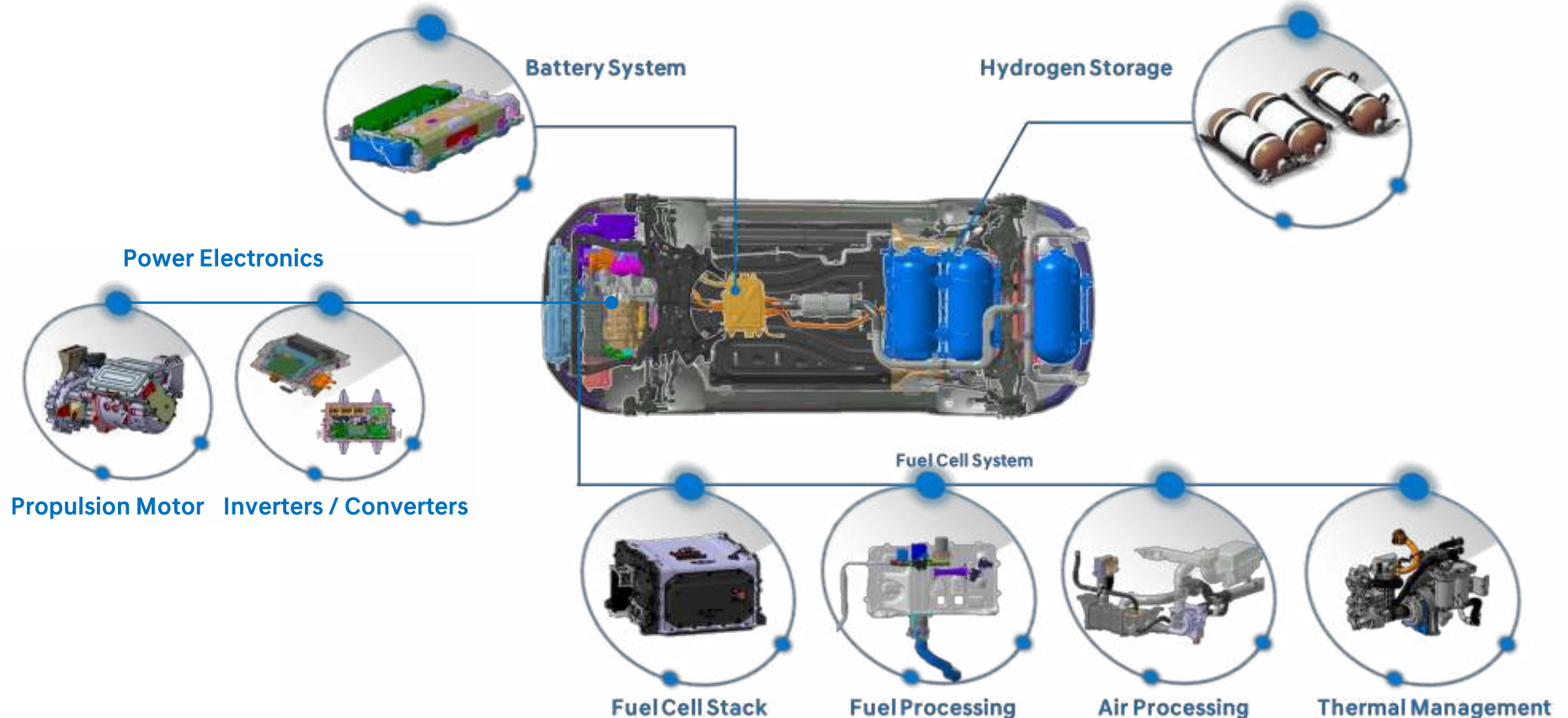
- 141 FCEV units (present)
- More than 1,500,000 miles
- Tens of thousands of customers
- Voice of customers : silent, comfortable, eco-friendly....



**Competitiveness of FCEV is outstanding
in bigger vehicle with larger mileage**

- **Hydrogen fueling time** (regardless of driving range)
: passenger car ~ 5 minutes, commercial vehicle ~ 20 minutes

Approx. 120 of component manufacturers are currently involved



Opportunities for profitable investment will expand
with automotive OEMs & new technology ventures growth



NEW THINKING. NEW POSSIBILITIES.

Lifetime partner in automobiles and beyond

HYUNDAI
MOTOR GROUP